

STANLEY®

TOOL EXCHANGE VALVE



USER MANUAL Safety, Operation and Maintenance



© 2014 Stanley Black & Decker, Inc.
New Britain, CT 06053
U.S.A.
69723 10/2014 Ver. 3

TABLE OF CONTENTS

SAFETY SYMBOLS	4
SAFETY PRECAUTIONS.....	5
HOSE TYPES.....	6
HTMA REQUIREMENTS.....	7
OPERATION.....	8
SPECIFICATIONS.....	10
TOOL EXCHANGE PARTS ILLUSTRATION AND LIST—HANDHELD VERSION P/N 67005.....	11
TOOL EXCHANGE PARTS ILLUSTRATION AND LIST—RAILROAD VERSION P/N 69722	12

IMPORTANT

To fill out a Product Warranty Validation form, and for information on your warranty, visit Stanleyhydraulics.com and select the Company tab, Warranty.
(NOTE: The warranty Validation record must be submitted to validate the warranty).

SERVICING: This manual contains safety, operation, and routine maintenance instructions. Stanley Hydraulic Tools recommends that servicing of hydraulic tools, other than routine maintenance, must be performed by an authorized and certified dealer. Please read the following warning.

⚠ WARNING








SERIOUS INJURY OR DEATH COULD RESULT FROM THE IMPROPER REPAIR OR SERVICE OF THIS TOOL.

REPAIRS AND / OR SERVICE TO THIS TOOL MUST ONLY BE DONE BY AN AUTHORIZED AND CERTIFIED DEALER.

For the nearest authorized and certified dealer, call Stanley Hydraulic Tools at the number listed on the back of this manual and ask for a Customer Service Representative.

SAFETY SYMBOLS

Safety symbols and signal words, as shown below, are used to emphasize all operator, maintenance and repair actions which, if not strictly followed, could result in a life-threatening situation, bodily injury or damage to equipment.

	<p>This is the safety alert symbol. It is used to alert you to potential personal injury hazards. Obey all safety messages that follow this symbol to avoid possible injury or death.</p>
	<p>This safety alert and signal word indicate an imminently hazardous situation which, if not avoided, <u>will</u> result in <u>death or serious injury</u>.</p>
	<p>This safety alert and signal word indicate a potentially hazardous situation which, if not avoided, <u>could</u> result in <u>death or serious injury</u>.</p>
	<p>This safety alert and signal word indicate a potentially hazardous situation which, if not avoided, <u>could</u> result in <u>death or serious injury</u>.</p>
	<p>This signal word indicates a potentially hazardous situation which, if not avoided, <u>may</u> result in <u>property damage</u>.</p>
	<p>This signal word indicates a situation which, if not avoided, <u>will</u> result in <u>damage to the equipment</u>.</p>
	<p>This signal word indicates a situation which, if not avoided, <u>may</u> result in <u>damage to the equipment</u>.</p>

Always observe safety symbols. They are included for your safety and for the protection of the tool.

LOCAL SAFETY REGULATIONS

Enter any local safety regulations here. Keep these instructions in an area accessible to the operator and maintenance personnel.

SAFETY PRECAUTIONS

Tool operators and maintenance personnel must always comply with the safety precautions given in this manual and on the stickers and tags attached to the tool and hose.

These safety precautions are given for your safety. Review them carefully before operating the tool and before performing general maintenance or repairs.

Supervising personnel should develop additional precautions relating to the specific work area and local safety regulations. If so, place the added precautions in the space provided on the previous page.

This valve will provide safe and dependable service if operated in accordance with the instructions given in this manual. Read and understand this manual and any stickers and tags attached to the tool and hose before operation. Failure to do so could result in personal injury or equipment damage.

- Always use accessories that conform to the specifications given in the OPERATION section of this manual.
- When working near electrical conductors, always assume that all conductors are energized and that insulation, clothing and hoses can conduct electricity. Use hose labeled and certified as non-conductive.
- To avoid personal injury or equipment damage, all valve repair, maintenance and service must only be performed by authorized and properly trained personnel.
- Do not carry the valve by hoses.
- The operator must start in a work area without bystanders. Flying debris can cause serious injury.
- Do not operate the valve unless thoroughly trained or under the supervision of an instructor. Establish a training program for all operators to ensure safe operation.
- Always wear safety equipment such as goggles, ear and head protection, and safety shoes at all times when operating the valve. Use gloves and aprons when necessary.
- The operator must be familiar with all prohibited work areas such as excessive slopes and dangerous terrain conditions.
- Maintain proper footing and balance at all times.
- Do not inspect or clean the valve while the hydraulic power source is connected. Accidental engagement can cause serious injury.
- Do not operate the valve at oil temperatures above 140°F/60°C. Operation at higher temperatures can cause higher than normal temperatures at the valve which can result in operator discomfort.
- Do not operate a damaged, improperly adjusted, or incompletely assembled valve.

HOSE TYPES

The rated working pressure of the hydraulic hose must be equal to or higher than the relief valve setting on the hydraulic system. There are three types of hydraulic hose that meet this requirement and are authorized for use with Stanley Hydraulic Tools. They are:

Certified non-conductive — constructed of thermoplastic or synthetic rubber inner tube, synthetic fiber braid reinforcement, and weather resistant thermoplastic or synthetic rubber cover. *Hose labeled **certified non-conductive** is the only hose authorized for use near electrical conductors.*

Wire-braided (conductive) — constructed of synthetic rubber inner tube, single or double wire braid reinforcement, and weather resistant synthetic rubber cover. *This hose is **conductive** and must never be used near electrical conductors.*

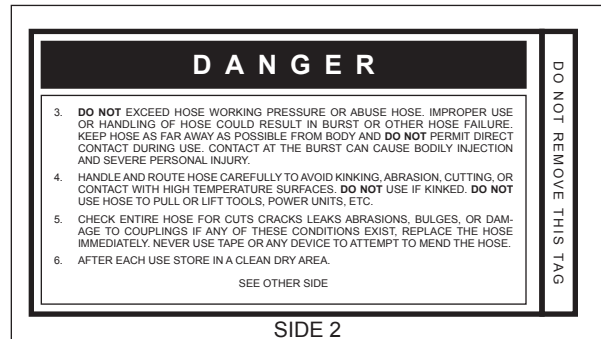
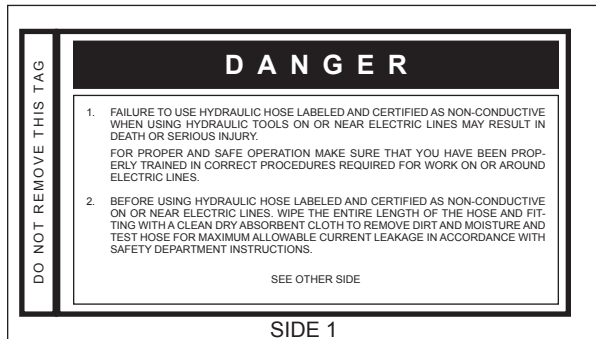
Fabric-braided (not certified or labeled non-conductive) — constructed of thermoplastic or synthetic rubber inner tube, synthetic fiber braid reinforcement, and weather resistant thermoplastic or synthetic rubber cover. *This hose is **not certified non-conductive** and must never be used near electrical conductors.*

HOSE SAFETY TAGS

To help ensure your safety, the following DANGER tags are attached to all hose purchased from Stanley Hydraulic Tools. DO NOT REMOVE THESE TAGS.

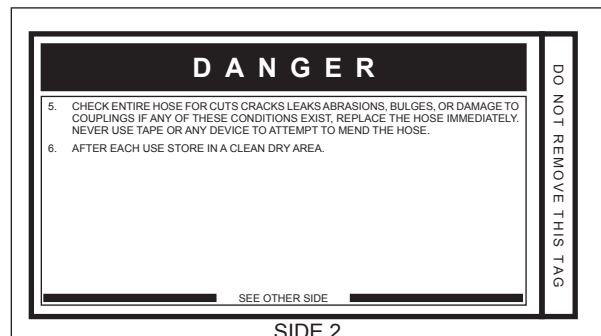
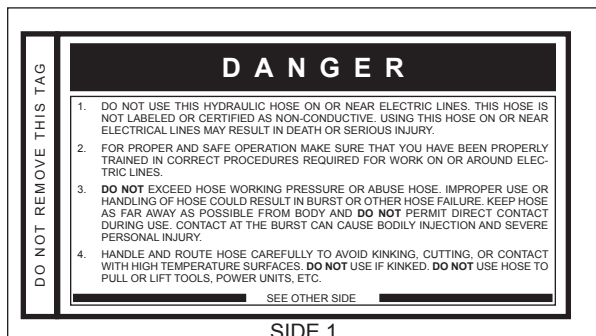
If the information on a tag is illegible because of wear or damage, replace the tag immediately. A new tag may be obtained from your Stanley Distributor.

THE TAG SHOWN BELOW IS ATTACHED TO “CERTIFIED NON-CONDUCTIVE” HOSE



(Shown smaller than actual size)

THE TAG SHOWN BELOW IS ATTACHED TO “CONDUCTIVE” HOSE.



(Shown smaller than actual size)

HTMA / EHTMA REQUIREMENTS

HTMA HYDRAULIC SYSTEM REQUIREMENTS	TOOL TYPE			
	TYPE I	TYPE II	TYPE RR	TYPE III
Flow Range	4-6 gpm (15-23 lpm)	7-9 gpm (26-34 lpm)	9-10.5 gpm (34-40 lpm)	11-13 gpm (42-49 lpm)
Nominal Operating Pressure (at the power supply outlet)	1500 psi (103 bar)	1500 psi (103 bar)	1500 psi (103 bar)	1500 psi (103 bar)
System relief valve setting (at the power supply outlet)	2100-2250 psi (145-155 bar)	2100-2250 psi (145-155 bar)	2200-2300 psi (152-159 bar)	2100-2250 psi (145-155 bar)
Maximum back pressure (at tool end of the return hose)	250 psi (17 bar)	250 psi (17 bar)	250 psi (17 bar)	250 psi (17 bar)
Measured at a max. fluid viscosity of: (at min. operating temperature)	400 ssu* (82 centistokes)	400 ssu* (82 centistokes)	400 ssu* (82 centistokes)	400 ssu* (82 centistokes)
Temperature: Sufficient heat rejection capacity to limit max. fluid temperature to: (at max. expected ambient temperature)	140° F (60° C)	140° F (60° C)	140° F (60° C)	140° F (60° C)
Min. cooling capacity at a temperature difference of between ambient and fluid temps	3 hp (2.24 kW) 40° F (22° C)	5 hp (3.73 kW) 40° F (22° C)	6 hp (5.22 kW) 40° F (22° C)	7 hp (4.47 kW) 40° F (22° C)
NOTE: Do not operate the tool at oil temperatures above 140° F (60° C). Operation at higher temperatures can cause operator discomfort at the tool.				
Filter Min. full-flow filtration Sized for flow of at least: (For cold temp. startup and max. dirt-holding capacity)	25 microns 30 gpm (114 lpm)	25 microns 30 gpm (114 lpm)	25 microns 30 gpm (114 lpm)	25 microns 30 gpm (114 lpm)
Hydraulic fluid Petroleum based (premium grade, anti-wear, non-conductive) Viscosity (at min. and max. operating temps)	100-400 ssu*	100-400 ssu* (20-82 centistokes)	100-400 ssu*	100-400 ssu*
NOTE: When choosing hydraulic fluid, the expected oil temperature extremes that will be experienced in service determine the most suitable temperature viscosity characteristics. Hydraulic fluids with a viscosity index over 140 will meet the requirements over a wide range of operating temperatures.				
*SSU = Saybolt Seconds Universal				

EHTMA HYDRAULIC SYSTEM REQUIREMENTS	CLASSIFICATION				
Flow Range	3.5-4.3 gpm (13.5-16.5 lpm)	4.7-5.8 gpm (18-22 lpm)	7.1-8.7 gpm (27-33 lpm)	9.5-11.6 gpm (36-44 lpm)	11.8-14.5 gpm (45-55 lpm)
Nominal Operating Pressure (at the power supply outlet)	1870 psi (129 bar)	1500 psi (103 bar)	1500 psi (103 bar)	1500 psi (103 bar)	1500 psi (103 bar)
System relief valve setting (at the power supply outlet)	2495 psi (172 bar)	2000 psi (138 bar)	2000 psi (138 bar)	2000 psi (138 bar)	2000 psi (138 bar)

NOTE: These are general hydraulic system requirements. See tool specification page for tool specific requirements

OPERATION

PRE-OPERATION PROCEDURES

Ensure that you have read and understand the safety instructions included in this manual before you operate the valve.

Check whether the valve is damaged. Check that all the parts are functioning correctly. Check that moving parts do not become stuck and are not damaged.

DO NOT use the valve if damaged or defective parts are detected. Damaged or defective parts must be repaired by a qualified technician.

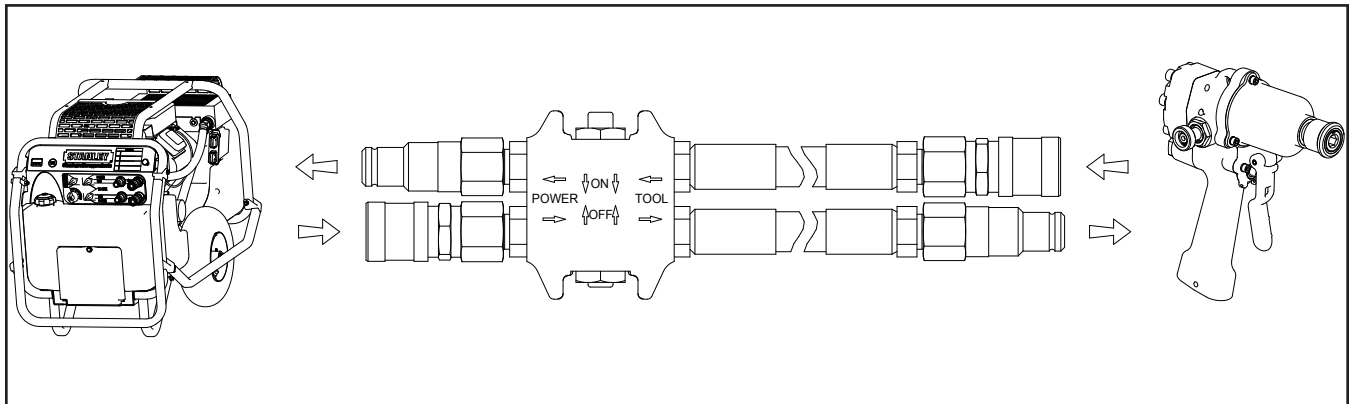
Using a calibrated flow meter and pressure gauge, check that the hydraulic power source develops a flow of 4-10.5 gpm/15-40 lpm at 2000 psi/140 bar with a maximum relief pressure not to exceed 2500 psi/170 bar.

INSTALLATION

The Tool Exchange Valve is intended to be installed between the tool and the end of the hydraulic hose.

Connect the Tool Exchange Valve to the hydraulic power supply on the side of the valve labeled "Power" as shown below. Observe the flow indicators cast into the valve and stamped on the couplers to ensure that the flow is in the proper direction.

Connect the Tool Exchange Valve to the tool on the side of the valve labeled "Tool" as shown below. Observe the flow indicators cast into the valve and stamped on the couplers to ensure that the flow is in the proper direction.



OPERATION

OPERATION

The Tool Exchange Valve is intended to function as a momentary ON/OFF valve that, when plumbed between a tool and a hydraulic power supply, will allow the end user to change tools without having to turn off the hydraulic circuit.

Shifting the Tool Exchange Valve's spool to the **ON** position will allow the tool to function normally. The hydraulic oil will flow from the hydraulic power supply through the valve to the tool. Return oil will flow from the tool through the valve and back to the hydraulic power supply's reservoir.

Shifting the Tool Exchange Valve's spool to the **OFF** position will disconnect the tool from the hydraulic power supply. This will allow the end user to remove the tool and attach an alternate tool. Shifting the Tool Exchange Valve's spool to the **ON** position will allow the alternate tool to function normally.

CAUTION

With a constant flow (open center) hydraulic power supply, shifting the Tool Exchange Valve's spool to the **OFF** position will force all the hydraulic flow through the system's relief valve.

This valve is intended for tool exchange only and should not be left in the **OFF** position for more than 30 seconds. Failure to heed this warning can result in seal failure, excessive heat, and damage to the tool and hydraulic power supply.

The Tool Exchange Valve should not be used as a tool ON/OFF valve. Use Part Number 38632 In-Line Valve for those applications.

STORAGE

Replace any damaged or missing safety labels and tags before storing the tool. Clean, dry and lubricate moving parts before storing the tool. Store the tool in a clean, dry place.

SPECIFICATIONS

Length.....	3.000 inches/7.6 cm
Width	1.500 inches/3.8 cm
Height	3.750 inches/9.5 cm
System Type.....	HTMA Type I, II, RR
Flow Range	4-10.5 gpm/15-40 lpm
Operating Pressure	2000 psi/140 bar
Maximum Relief Pressure	2500 psi/170 bar
Tool Porting.....	-8 SAE O-Ring

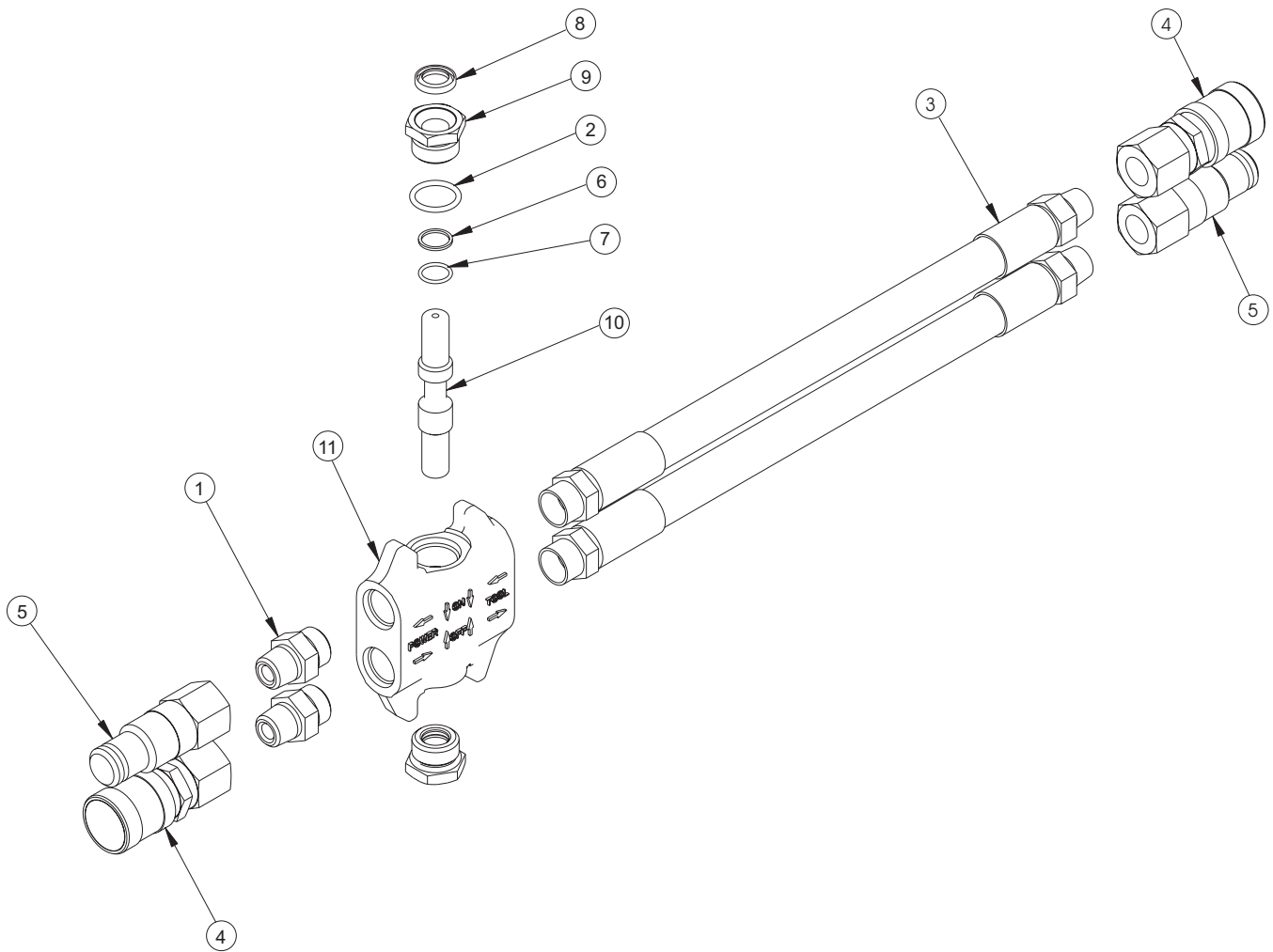
EQUIPMENT PROTECTION & CARE

NOTICE

In addition to the Safety Precautions found in this manual, observe the following for equipment protection and care.

- Make sure all couplers are wiped clean before connection.
- Always store the valve in a clean dry space, safe from damage or pilferage.
- Make sure the circuit PRESSURE hose (with male quick disconnect) is connected to the **IN** port. The circuit RETURN hose (with female quick disconnect) is connected to the opposite port. Do not reverse circuit flow. This can cause damage to internal seals.
- Always replace hoses, couplings and other parts with replacement parts recommended by Stanley Hydraulic Tools. Supply hoses must have a minimum working pressure rating of 2500 psi/172 bar.
- Do not exceed the rated flow (see Specifications in this manual for correct flow rate and model number). Rapid failure of the internal seals may result.
- Valve repair should be performed by experienced personnel only.
- Make certain that the recommended relief valves are installed in the pressure side of the system.
- Do not use the valve for applications for which it was not intended.

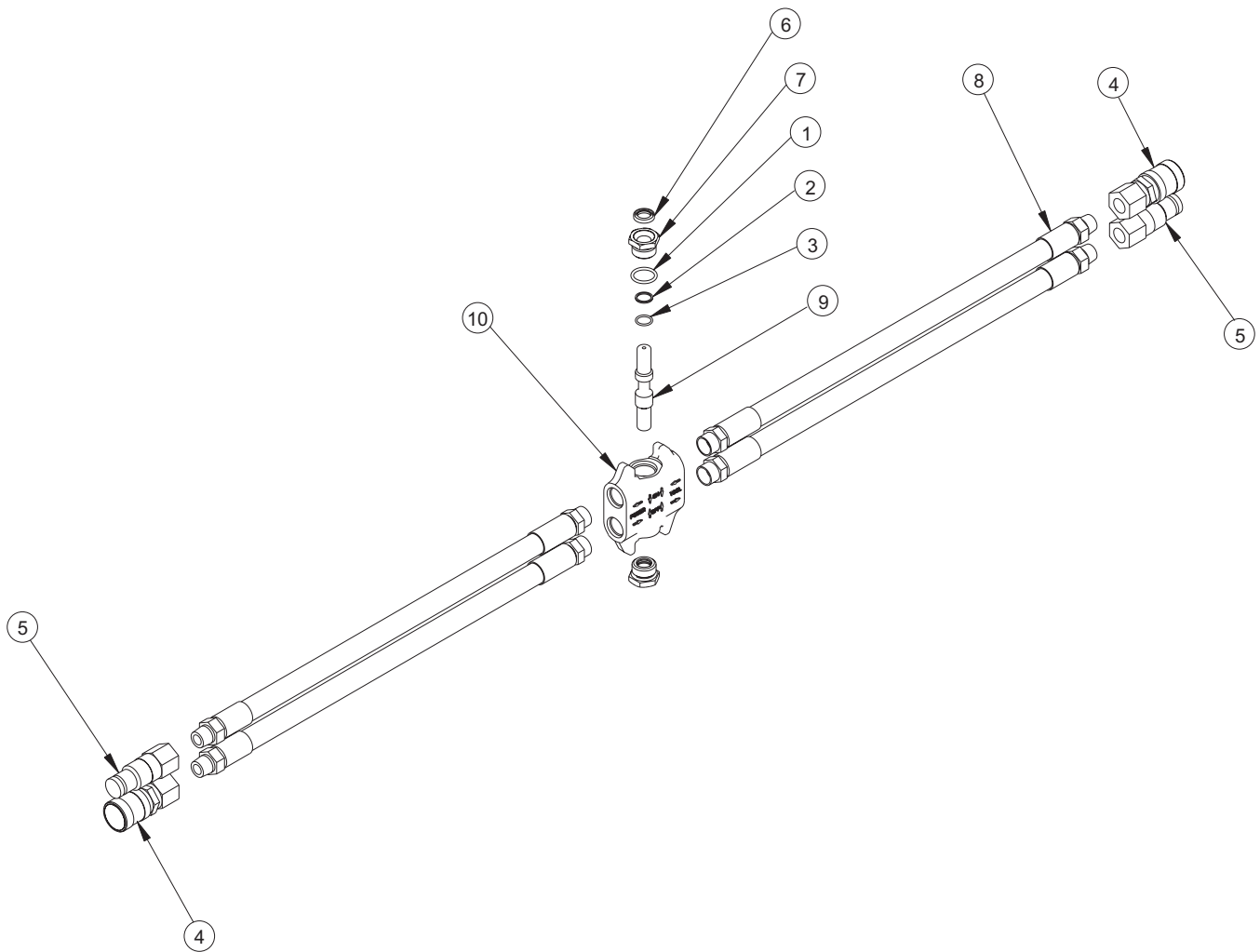
TOOL EXCHANGE VALVE PARTS



TOOL EXCHANGE PARTS ILLUSTRATION AND LIST— HANDHELD VERSION P/N 67005

ITEM	PART NO.	QTY	DESCRIPTION
1	00936	2	ADAPTER
2	01604	2	O-RING
3	01652	2	HOSE WHIP, 12"
4	03972	2	COUPLER, 3/8 FEMALE, 3/8 NPT FL FACE SET 03971
5	03973	2	COUPLER, 3/8 MALE, 3/8 NPT FL FACE SET 03971
6	07224	2	BACK-UP RING
7	07626	2	O-RING
8	56747	2	SEAL WIPER
9	56749	2	SEAL CAP
10	67008	1	VALVE SPOOL
11	69721	1	INLINE CALVE BODY ASSY

TOOL EXCHANGE VALVE PARTS



TOOL EXCHANGE PARTS ILLUSTRATION AND LIST— RAILROAD VERSION P/N 69722

ITEM	PART NO.	QTY	DESCRIPTION
1	01604	2	O-RING
2	07224	2	BACK-UP RING
3	07626	2	O-RING
4	47436	2	COUPLER, 3/8 FEMALE, 3/8 NPT FL FACE SET 47438
5	47437	2	COUPLER, 3/8 MALE, 3/8 NPT FL FACE SET 47438
6	56747	2	SEAL WIPER
7	56749	2	SEAL CAP
8	66727	4	HOSE ASSY
9	67008	1	VALVE SPOOL
10	69721	1	TOOL EXCHANGE VALVE

STANLEY®

Stanley Hydraulic Tools
3810 SE Naef Road
Milwaukie, Oregon 97267-5698 USA
(503) 659-5660 / Fax (503) 652-1780
www.stanleyhydraulics.com