

STANLEY®

www.stanleyinfrastructure.com



SPL31

SPIKE PULLER

LIGHTWEIGHT // HYDRAULIC

Stanley's SPL31 Series Hydraulic Spike Puller provides the ultimate in spike removal for all railroad maintenance jobs. The automatic dual-stage valve greatly reduces spike kick-back to the operator. Spike extraction can be accomplished from any position making spike pulling simple and effortless.

SPL31 SPIKE PULLER

FEATURES AND BENEFITS

- Redesigned handle for improved durability and ergonomics
- Side carry handle for improved ease of use and ergonomics
- Industry-leading pulling force of 16,647 lbs
- Composite hydraulic cylinder for maximum strength and reduced weight
- Redesigned handle provides a comfortable grip and alignment for the operator
- New seal design extends life and service intervals
- Redesigned lower chute decreased weight

SPECIFICATIONS

SPL SERIES	
PULLING FORCE	16,647 LBS / 7550 KG
PRESSURE	2500 PSI / 172 BAR
MAXIMUM BACK PRESSURE	250 PSI / 17 BAR
FLOW RANGE	5-10 GPM / 19-38 LPM HTMA TYPE I - II, RR
PORTING	-8 SAE O-RING
COUPLERS	HTMA/EHTMA FLUSH FACE TYPE MALE AND FEMALE
CONNECT SIZE AND TYPE	3/8 MALE PIPE ADAPTER
WEIGHT*	36 LBS / 16.3 KG
OVERALL LENGTH	32.75 IN / 83.1 CM
OVERALL HANDLE WIDTH	16.25 IN / 41.2 CM
OVERALL HEIGHT	5.25 IN / 13.3 CM
MAXIMUM FLUID TEMPERATURE	140° F / 60° C

* Without hose whips & couplers - with oil

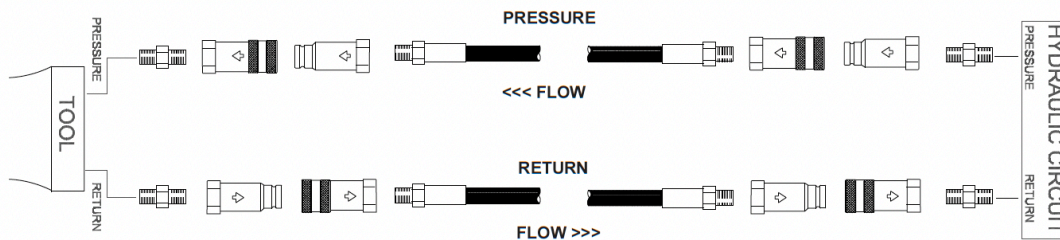
ORDER INFORMATION

MODEL NO.	DESCRIPTION
SPL31A	AUTO TWO STAGE, PARKER COUPLERS
SPL31AN	AUTO TWO STAGE, AEROQUIP COUPLERS
SPL31AS	AUTO TWO STAGE, PARKER COUPLERS, SAFETY TRIGGER

ACCESSORIES

PART NO.	DESCRIPTION
82791	GRIP JAW (QTY. 2 REQUIRED)
82792	"W" GRIP JAW CASTING (HAIR PIN - QTY. 2 REQUIRED)

TYPICAL HOSE CONNECTIONS



WARRANTY

Stanley tools and associated parts are warranted against defects in materials and workmanship for a period of 18 months from the date of purchase. Stanley Hydraulic Tools reserves the right to repair or replace only those parts which prove to have been defective at the time of purchase. This warranty becomes void if maximum voltage and current ratings are exceeded.