

# STANLEY®



## SPL31 SPIKE PULLER

Stanley's® SPL31 Series Hydraulic Spike Puller provides the ultimate in spike removal for all railroad maintenance jobs. The automatic dual-stage valve greatly reduces spike kick-back to the operator. Spike extraction can be accomplished from any position making spike pulling simple and effortless.

# SPL31 SPIKE PULLER

## FEATURES AND BENEFITS

- The addition of a side carry handle improves the tool's ease of use and ergonomics
- Industry-leading pulling force of 16,647 lbs
- Composite hydraulic cylinder for maximum strength and reduced weight
- The handle has been redesigned to improve durability, ergonomics, and operator comfort. It offers a comfortable grip and precise alignment, providing a superior user experience
- New seal design extends life and service intervals
- Redesigned for improved durability and longer chute lifespan

## SPECIFICATIONS

PULLING FORCE	16,647 LBS / 7550 KG
PRESSURE	2500 PSI / 172 BAR
MAXIMUM BACK PRESSURE	250 PSI / 17 BAR
FLOW RANGE	5-10 GPM / 19-38 LPM HTMA TYPE I - II, RR
PORTING	-8 SAE O-RING
COUPLERS	HTMA/EHTMA FLUSH FACE TYPE MALE AND FEMALE
CONNECT SIZE AND TYPE	3/8 MALE PIPE ADAPTER
WEIGHT*	36 LBS / 16.3 KG
OVERALL LENGTH	32.75 IN. / 83.1 CM
OVERALL HANDLE WIDTH	16.25 IN. / 41.2 CM
OVERALL HEIGHT	5.25 IN. / 13.3 CM
MAXIMUM FLUID TEMPERATURE	140° F / 60° C

\* Without hose whips & couplers - with oil

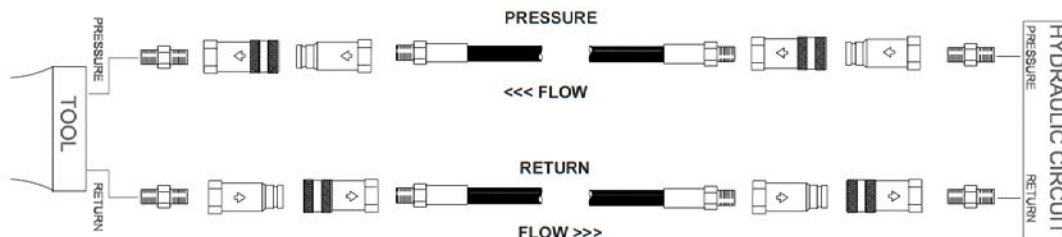
## ORDER INFORMATION

MODEL NO.	DESCRIPTION
SPL31A	AUTO TWO STAGE, PARKER COUPLERS
SPL31AN	AUTO TWO STAGE, AEROQUIP COUPLERS
SPL31AS	AUTO TWO STAGE, PARKER COUPLERS, SAFETY TRIGGER

## ACCESSORIES

PART NO.	DESCRIPTION
82791	GRIP JAW (QTY. 2 REQUIRED)
82792	"W" GRIP JAW CASTING (HAIR PIN - QTY. 2 REQUIRED)

## TYPICAL HOSE CONNECTIONS



**STANLEY**

3810 SE Naef Road // Milwaukie, OR 97267 // 833-723-1843 // [www.stanleyinfrastructure.com](http://www.stanleyinfrastructure.com)

2024.03.31